

RAPIDO small on the road

RAPIDO The leading manufacturer of extending folding caravans with rigid panels.
Over 23.000 caravans in use.
20 years of manufacturing experience.



The details and description of the models are correct at the time of going to press, but the manufacturers by their policy of constant improvement, reserve the right to change models as necessary without prior notice.

Importer



bedaurol@hotmail.com

RAPIDO spacious on site



DEALER

CAMPRITE LTD
24, Lonsdale Road
LONDON NW6 6RD
Tel. 01.328.2168

Product patented
IN MAYE - FRANCE



RAPIDO

**the only true rigid caravans
that fold and extend
new series with
"servo-assisted models"**

CAMPING CONTINENTAL

OLD CLYDE CAMPING LTD.

WATLING STREET, HILCKLEY, LEICS

Telephone 32625/32841



Gold Medals



Paris



Brussels



Paris

1st Prize and Gold Medal
at the Salon of Inventors (Paris)



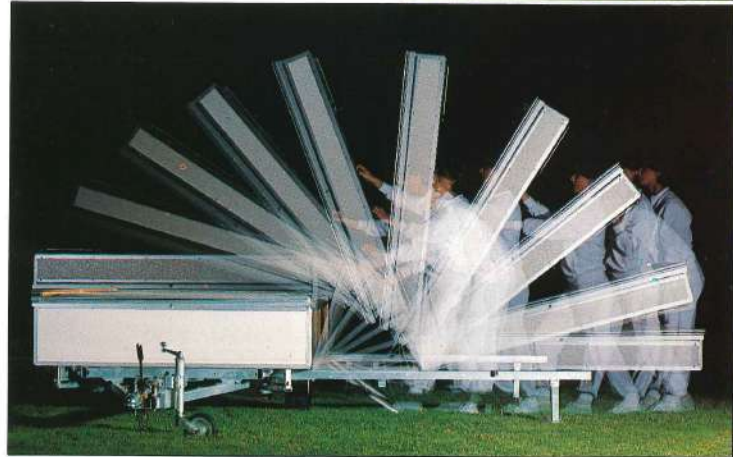
NEW GENERATION
NEW SERIES
matic
 SERVO-ASSISTED MODELS



RAPIDO Thanks to the « assisted opening » one person can easily fold and unfold the Rapido, to produce a comfortable rigid caravan.



Stored on end or on it's side, with the aid of storage wheels, the **RAPIDO** occupies a floor area of less than 2sq. metres (2.4sq. yards).



features of the new series

- Assisted opening ● Bodywork : front and floor in « sandwich panels » with styrofoam insulation
- Roof in « Sandwich Panel » laminated marine plywood and chlorofibre insulation ● Exterior cladding in lacquered sheet aluminium interior cladding in washable P.V.C. ● Floor, plasticised carpeting on felt backing ● All parts of the caravan are easily dismantled and the surrounds are protected by anodised profiled aluminium ● Chassis has been galvanised with a hot-zinc dipping process ● Axle with metal torsion-bar suspension ● Double-action shock absorbers ● Wheels 145 x 10 ● Inertia brakes with Oleo-pneumatic regulator ● Incorporated hand-brake with safety chain ● 50 mm ball hitch ● Stabilisation with six points of contact with the ground ● Telescopic retractable jockey-wheel ● Tubular chassis with electrically welded steel, heat galvanised ● Electric European lead DIN 7 wires ● 12 volt inside circuit ● Closing with bolt and safety lock ● Tinted plexiglass windows ● Simulated wood finish.



The **RAPIDO** chassis is electrically welded and completely galvanised to ensure maximum durability. The tow bar can be folded or removed completely.



confort-matic

the opportunity to « Live in the open air » by opening the end wall.

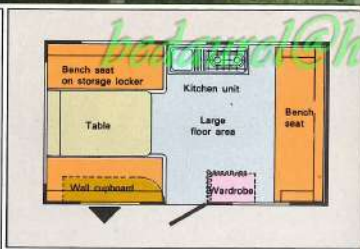
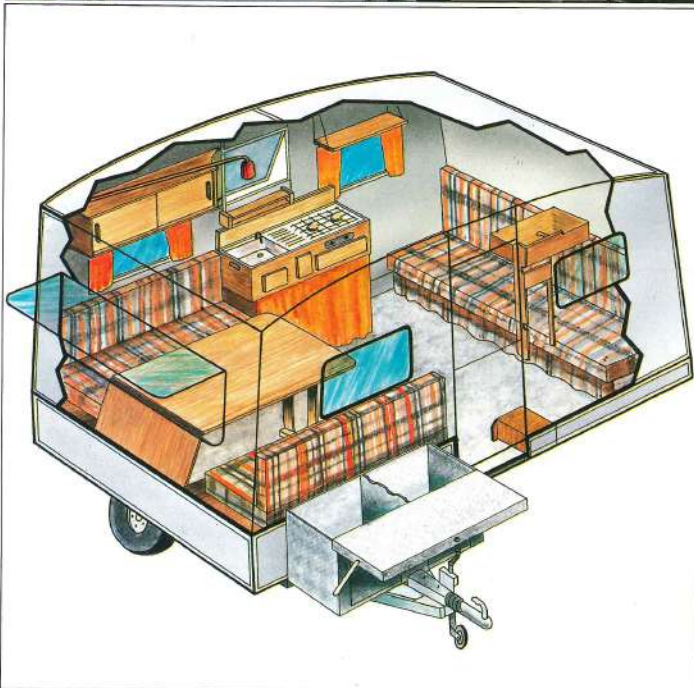
RAPIDO : an Economic Caravan

With a **RAPIDO** behind your car, you can tow with peace of mind and safety.

- Minimum of wear for the car, petrol consumption reduced, rear visibility unimpaired.
- The top of the trailer can carry a useful amount of equipment (including Mattresses) protected by the strong blue P.V.C. cover.
- Sufficient equipment for 5 people can be stored inside the trailer.

the least width, the least length, the least height, the lightest, the RAPIDO is the smallest on the road, yet the most spacious on site!

confort-matic



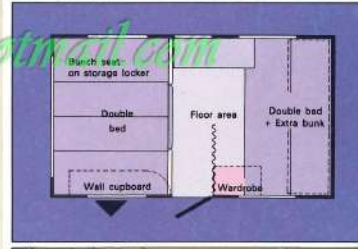
daytime layout

A generous amount of space for 4 or 5 people to live comfortably.

- Solid Table
- 4 place bench seats with arm rests.

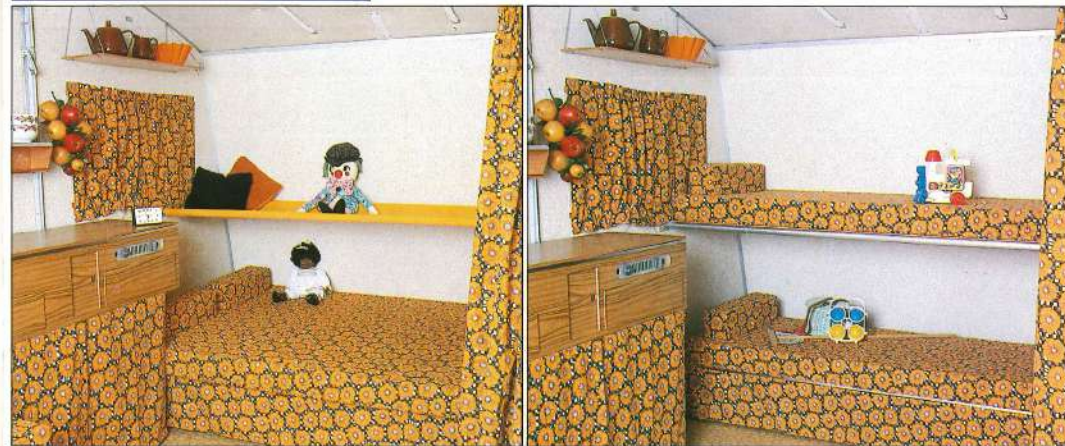
technical data-confort

- Ex works weight 395 kg (7.77 cwt)
- Max gross weight 670 kg (9.82 cwt)
- Tow bar length (not included below) 115 cm (3'9")
- Trailer width 155 cm (5'1")
- Caravan width 200 cm (6'6")
- Trailer length 200 cm (6'6")
- Caravan length 355 cm (11'8")
- Trailer height 99 cm (3'3")
- Caravan height 190 cm (6'3") (internal)
- Caravan floor area 7sq metres (76.23sq ft)
- 2-5 berth
- Type pressure 32 lbs per sq inch



night time layout

- 1 double bed over storage lockers and table when folded, 135 x 195 cm (4'4" x 6'5")
- The bench seat transforms to a very comfortable double bed, 120 x 195 cm (4' x 6' 5")
- All mattresses are of 12 cm (5") deep foam with zipped covers.
- The caravan can be separated by a curtain provided.
- Double bed 120 x 195 cm (4' x 6' 5")
- Canvas hammock over (optional)
- 2 individual beds-one above the other (extra pole for this optional)



confort-matic



confort-matic The opportunity to « live in the open air » by opening the end wall.



kitchen unit

Comprising stainless steel sink, drainer and two burner cooker unit, foot operated water pump to tap, drawers closing work surface, shelves.



bench seat

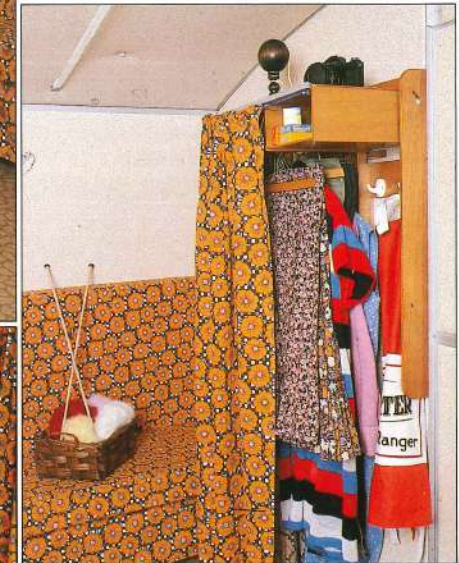
Settee bench convertible into two beds.

wall cupboard

Bookcase with sliding doors, separating panel, mirror, lamp.

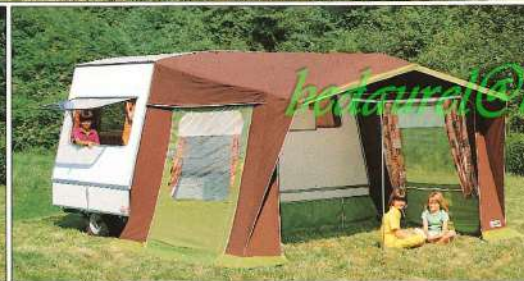
folding wardrobe

Retractable hanging wardrobe with rail and coat hanger. Wardrobe curtain also useable as bedroom divide.






RAPIDO



bretagne awning

— Depth 225 cm (7'5")
Full awning with duralinium frame.
Continental peaked front, and interchangeable front panel.
Area : 8.50sq metres (89.76sq. yds)
Groundsheet optional extra.



anjou awning

— Depth 200 cm (6'6")
Full awning with steel frame
— All panels removable to give sun canopy
Area : 7.50sq metres (79.20sq. yds)
Groundsheet optional extra.

option equipment

- Bretagne or Anjou Awning.
- Storage Box.
- Storage Brackets with roller-castors.
- Spare Wheel with Carrier.
- Fold-Away Kitchen with chrome framework for outside use (Confort-Export only)
- Gas Heater built into Floor (Factory fitted only)
- 5th place canvas hammock.
- Table extension.
- Refrigerator.

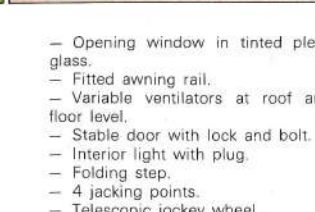


storage box

— Duralinox storage box with room for the refrigerator or use as a kitchen in the awning and also for picnics.

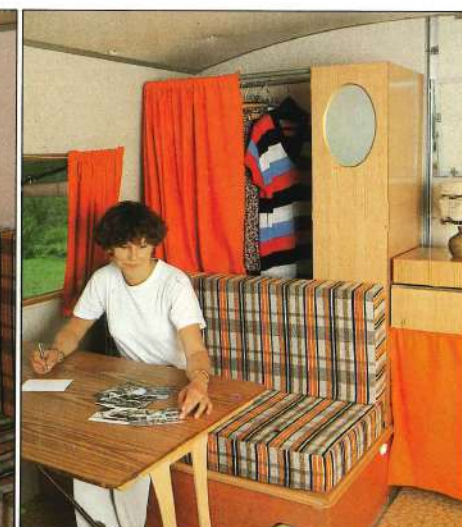
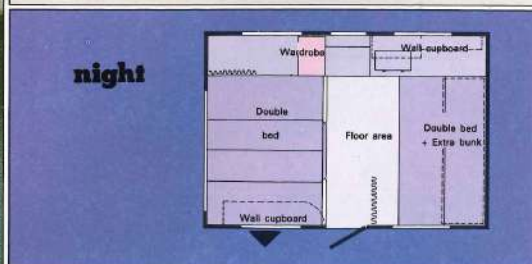
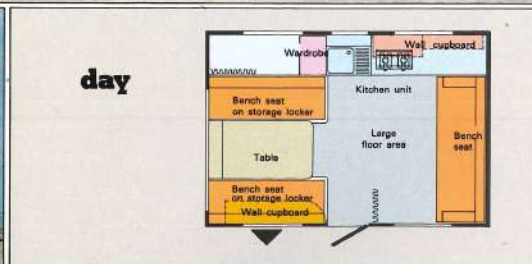
standard fittings

- Oak laminated furniture.
- Table 110 cm x 80 cm (3'7" x 2'8")
- Bed above table and storage lockers.
- Bench seat with backrest.
- Kitchen unit with drawers.
- Sink/drainier and double gas burner in stainless steel.
- Foot pump and water container.
- 2 wall cupboards with mirror.
- Wardrobe with coat rail and hooks.
- Trailer cover.
- Dividing curtain.
- Double curtains to all windows.
- Comfortable mattresses with zippered covers.
- Attractive material covering.



- Opening window in tinted plexi-glass.
- Fitted awning rail.
- Variable ventilators at roof and floor level.
- Stable door with lock and bolt.
- Interior light with plug.
- Folding step.
- 4 jacking points.
- Telescopic jockey wheel.

record-matic



special fittings (INCLUDED)

- Rigid hanging wardrobe, with rail and shelf.
- Large laminated work-top.
- Bookcase.
- Interior walls P.V.C. covered for easy cleaning.
- Table 110 cm x 70 cm.
- Sink and draining board in stainless steel. Cooker with two burners and grill.
- Electric water-pump with jerrycan. (Record and Export only).
- Shelves.

technical data-record

- Ex-works weight 490 kg (1080 lbs)
- Max. gross weight 670 kg (1320 lbs)
- Towbar length 115 cm (3' 9")
- Trailer width 155 cm (5' 1")
- Caravan width 240 cm (7' 11")
- Trailer length 240 cm (7' 11")
- Caravan length 355 cm (11' 8")
- Trailer height 104 cm (3' 5")
- Caravan height 190 cm (6' 3") (Internal)
- Caravan Floor Area 8.5sq metres (89.76sq ft.) 4-5 berth. - Tyre pressure 2.4 bars (35lbs persq. in).



export-matic



specific features

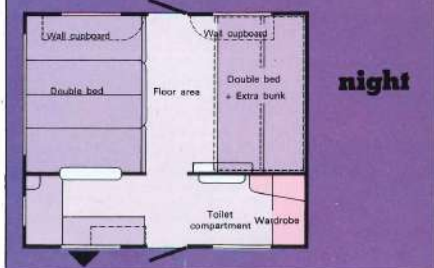
- Separate kitchen area with serving hatch.
- Oak laminated furniture.
- Stainless steel sink/drainer.
- Kitchen unit with drawers and shelves-double burner cooker-electric water pump-water container.
- 3 wall cupboards with mirrors.
- 2 opening plexiglass windows.
- 2 stable doors with locks and bolts.
- Optional 5th or 6th bunks-carvas or rigid with mattress 5 cm (2 1/2") deep.

technical data-export

- Ex. works weight 530 kg (1170lbs)
- Max. gross weight 670 kg (1430lbs)
- Tow bar length 115 cm (3'9")
- Trailer width 155 cm (5'1")
- Caravan width 285 cm (9'4")
- Trailer length 285 cm (9'4")
- Caravan length 355 cm (11'8")
- Trailer height 104 cm (3'5")
- Caravan height 190 cm (6'3") (Internal)
- Caravan floor area 10sq metres (105.60sq. ft) 4-6 berth
- Tyre pressure 2.5 bars (36lbs persq. in)



day



night

