



bedaurel@hotmail.com



Stow-away in your garage

The Rapido folding caravan can be unobtrusive. With the use of storage wheels it can be turned on its side and stores taking only 2 m² of space.

Another good idea : the Rapido chassis can be used without the caravan. The chassis is strong electrically welded steel and heat galvanised. It is practical : the tow-bar is movable. Use it to transport other goods or make a trailer.

Rapido, the leading manufacturer of extending rigid caravans. More than 33,000 caravans in use. The number of users increasing all the time 22 years of recommendation... it's your guarantee.

CARAVANS RAPIDO LIMITED

Birchington House, Birchington Road
LONDON NW6 4LJ - Tél. 1328 2168
Télex 299283



LA PLIANTE DE RAPIDO

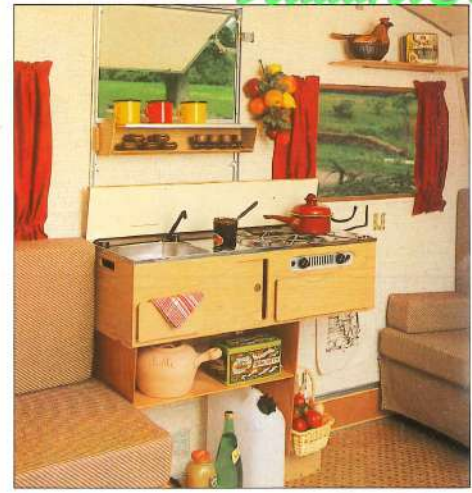
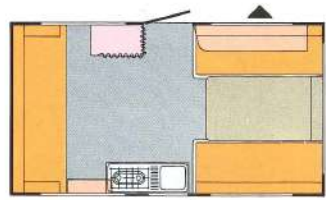


Paris Bruxelles Paris
1^{er} Prix et Médaille d'Or Concours LEPINE

CONFORT-MATIC



bodaurel@hotmail.com



Happy medium

"Confort" or "Export"? If you are undecided the "Record" which is middle of the range may be for you with some extra fittings, including a rigid wardrobe with a hanging rail, large working surface extra shelves.

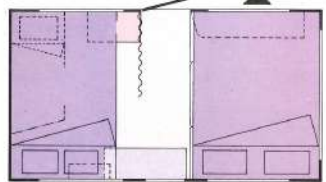
Technical information : unladen weight : 480 kg (9 1/2 cwt).
 Carrying capacity : 245 kg (5 cwt). Max. gross weight : 13 2/3 cwt. 695 kg.
 Length : (8') 240 cm folded, (11'8") 355 cm erected. Height : (3'5") 104 cm folded, (6'3") 190 cm (erected) interior height erected.



Spend comfortable nights

In its night-time position, there are several possible arrangements from the same fittings. The table and chests become one large double bed (4'5"x6'5") 135x195 cm. The settee bench becomes either a 2 person bed (4'3"x6'5") 130x195 or 2 separate couchettes, bunkstyle (with aid of an optional tube) or the possibility of a canvas hammock on top.

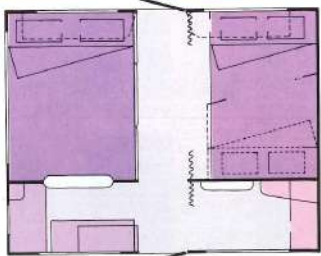
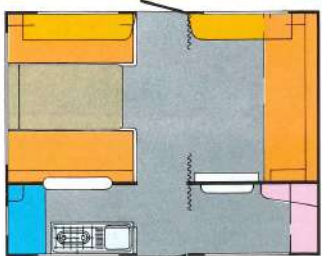
Technical information : empty weight : 395 kg (4 places) (7 3/4 cwt).
 Useful load : 104 kg (2 cwt) maximum gross weight 499 kg (9 3/4 cwt).
 Can be towed by 3 CV and larger. Size : 5'1" - 155 cm folded, 6'7" 200 cm open.
 Length : 6'7" - 200 cm folded, 11'8" 355 cm open. Height : 99 cm folded 3'3" folded - 190 cm - 6'3" inside, opened.
 No. of seats : 2-5.
 Surface area erected : 7 m² Wheel pressure : 2.6 bars (38 p.s.i.).
 Foam mattress 12 cm thick (4 3/4").



EXPORT-MATIC



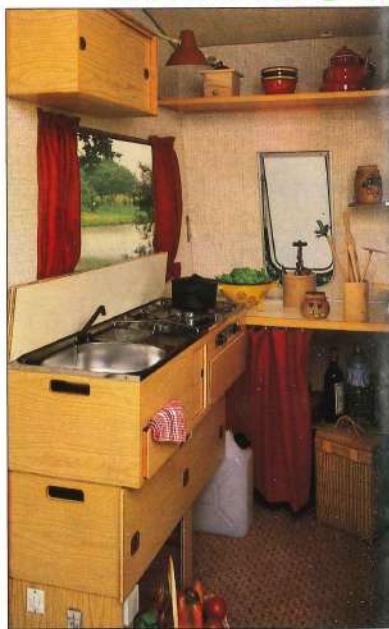
bedaurel@hotmail.com



The largest model

With ground surface of 10 m² it can accommodate up to 6 people. It is the most spacious model in particular with its separate kitchen with hatch, its 3 overhead cupboards with mirror, its 2 opening plexiglass windows, its 2 stable doors with bolt and locks.

Technical information : empty weight : 540 kg. Carrying capacity : 155 kg. Max. gross weight : 695 kg (13 2/3 cwt.). Can be towed by 5 CV. Size (5'1") 155 cm folded, (9'4") erected. Length : (9'4") 285 cm folded (11'8") 355 cm erected. Height : (3'5") 104 cm folded, (6'3") 190 cm interior height erected. Seating capacity : 4-6. Surface area erected 10 m². Wheels : 145x12. Pressure : 2.7 bars (40 p.s.i.). Night time sleeping accommodation same arrangement as in Confort-matic. In addition 2 bunk beds (soft or firm) can sleep 6.



General features of Matic range

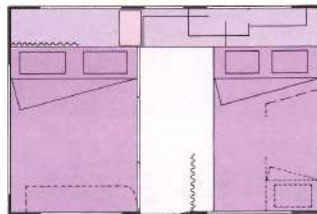
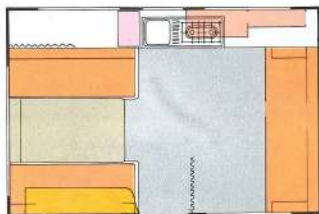
Assisted opening with steel torsion bars. Bodywork : front and floor consists of "sandwich panels" with styrofoam insulation. The roof "sandwich panel" is laminated. Interior roof filling of chlorofibre wool insulation. Exterior surface of prelacquered aluminium. Interior wall surface of washable PVC, plastified floor covering. All parts of the caravan are easily dismantled, and their edges protected by profiled aluminium. Anti-rust protection of metal parts by galvanising heat treatment. Axle with metal torsion-bar and double action shock absorbers. Braking with oleopneumatic interia-hitch. Built-in over-run braking

system. 50 mm tow hitch, 6 ground stabilising parts. Tubular steel chassis electrically welded and zinc dipped galvanised. European electric circuit DIN 7 wires. Interior 12 volt circuit with transformer. 220 V current. Electric water pump. Registration plate. Stable door with bolt and safety lock. Windows in tinted plexiglass. Fitted grill. In accordance with French Standard NF S. 56200.

RECORD-MATIC



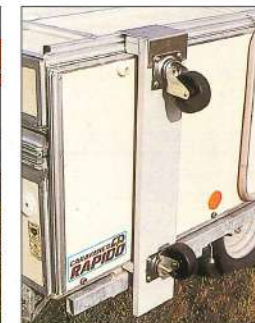
bedareel@hotmail.com



Happy days

Rapido folding caravans offers you many advantages. On the road they are not the least bit cumbersome and are very economical - a 3 CV is adequate for towing them. When you stop, in a few moments they become firm caravans, with no effort even for a single person, thanks to assisted opening with torsion bars. Complete with clever ideas (first prize and gold medal from Lepine competition), they are even more appealing in their new sand-coloured holiday set-up.

In the day time, 4-5 people can live there in comfort. Settee bench seats up to 4 people. Table with laminated top. Benches on chests. Overhead cupboard. Wardrobe. Rooms separated by curtains. Kitchen unit with cooker-sink in stainless steel. Inside lighting with transformer. It is possible to open the panoramic side panel so as to live in the open air.



1. Touraine Awning. Weight : 25 kg (55 lbs). Depth : 250 cm (8'2"). Awning completely enclosed with peak canopy - steel frame. Surface area 9.30 m² Optional ground sheet.
 2. Bretagne Awning. Weight : 20 kg (44 lbs). Depth : 225 cm (7'5"). Awning completely enclosed with peak canopy. Dural frame with removable side panels. Surface area : 9.30 m² Optional ground sheet.
 3. Sun canopy.
 4. Spare wheel with carrier.
 5. Toilet Tent/Porch Awning. Size (3'3") 100 cm x (4') 120 cm. Completely closeable with door, clear plastic and window mosquito net window. Steel frame.
 6. Storage box with fridge.
 7. Bicycle carrier.
 8. Kitchen legs for free standing kitchen.
 9. Storage wheels for on the side storing.
- All our models can be equipped with double glazing and an extra opening window.**

8

9